

SS32A-T thru SS320A-T

Reverse Voltage 20 ~ 200 V

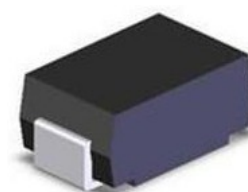
Automotive Surface Mounted Schottky Barrier Rectifiers

PROSEMI AEC-Q101 qualified Surface Mounted Schottky Barrier Rectifiers is specially designed to protect sensitive electronic devices from lightning and other transient voltage.



Features

- Low reverse leakage
- High forward surge capability
- High reliability grade (AEC Q101 qualified)
- High temperature soldering guaranteed: 260 °C / 10seconds
- Lead and body according with RoHS standard
- System: Accreditation through IATF16949 System



DO-214AC/SMA

Mechanical Data

- Case:DO-214AC Molded plastic
- Epoxy: UL 94V-0 rate flame retardant
- Lead: Pure tin plated, lead free

Maximum Ratings & Characteristics

Ratings at 25 °C ambient temperature unless otherwise specified.

Parameter	Symbols	SS32A-T	SS33A-T	SS34A-T	SS35A-T	SS36A-T	SS38A-T	SS310A-T	SS315A-T	SS320A-T	Unit	
Maximum repetitive peak reverse voltage	VRRM	20	30	40	50	60	80	100	150	200	V	
Maximum RMS voltage	VRMS	14	21	28	35	42	56	70	105	140	V	
Maximum DC blocking voltage	VDC	20	30	40	50	60	80	100	150	200	V	
Maximum average forward rectified current	IF(AV)	3.0									A	
Non-repetitive peak forward surge current 8.3 ms singlehalf sine-wave	IFSM	100									A	
@IF=3.0A Maximum forward voltage	VF	0.55			0.70		0.85		0.95		V	
@VDC Maximum reverse current	IR	0.5					0.1					mA
TA= 25°C												
TA=100°C		20										
Typical thermal resistance (Note 1)	RθJA RθJL	55					17					°C/W
VR=4.0V,f=1MHz Type junction capacitance	CJ	160									pF	
Operating junction	TJ	-55 --- +125					-55 --- +150					°C
Storage temperature rang	TSTG	-55 --- +150									°C	

Note:

1) Thermal resistance from junction to ambient , PCB mounted.

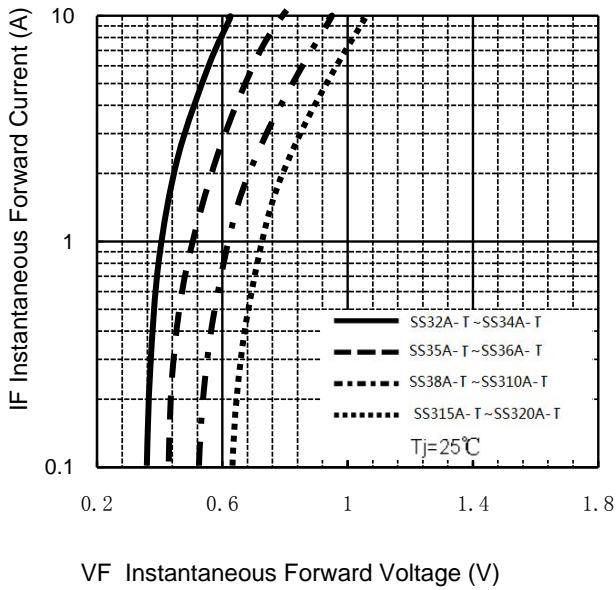
Automotive Surface Mounted Schottky Barrier Rectifiers

SS32A-T thru SS320A-T

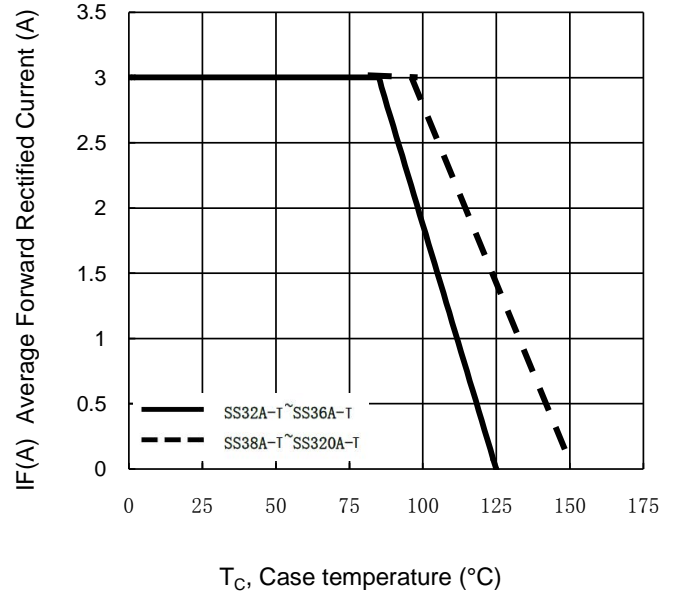
Reverse Voltage 20 ~ 200 V

Characteristic Curves

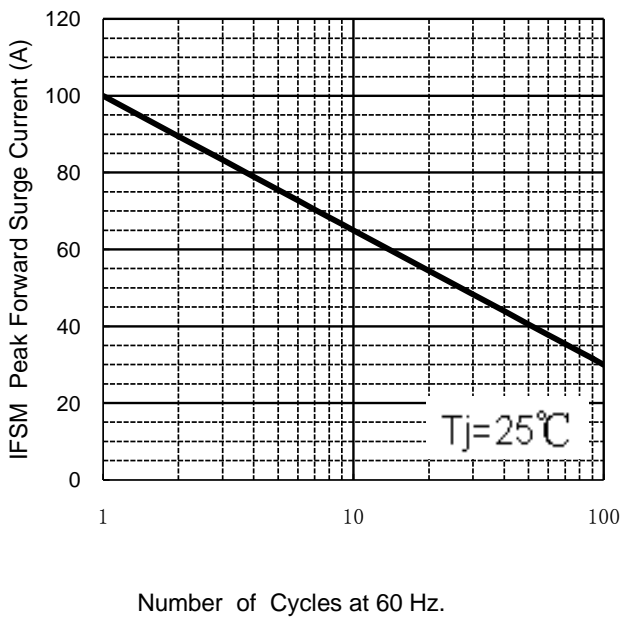
TYPICAL FORWARD CHARACTERISTIC



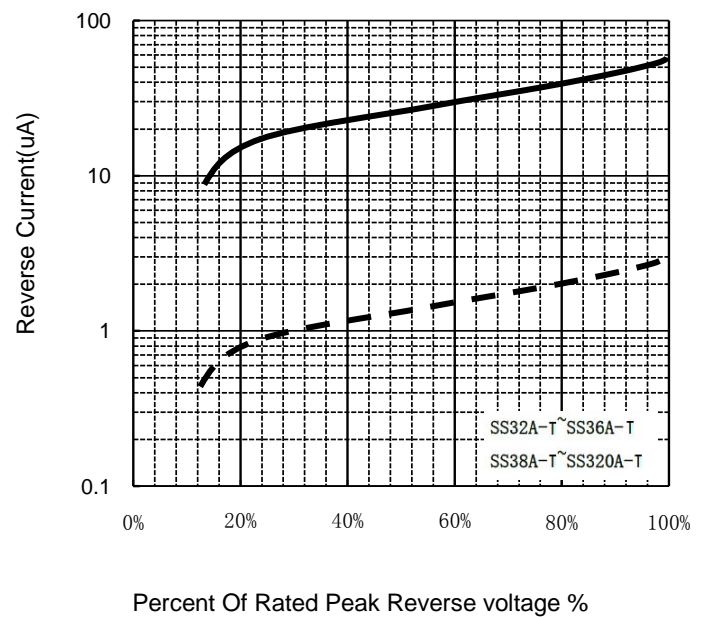
FORWARD CURRENT DERATING CURVE



MAXIMUM NON REPETITIVE PEAK FORWARD SURGE CURRENT



Typical Reverse Characteristics

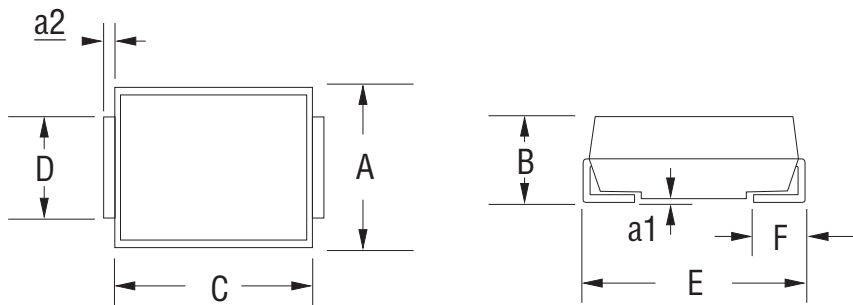


Automotive Surface Mounted Schottky Barrier Rectifiers

SS32A-T thru SS320A-T

Reverse Voltage 20 ~ 200 V

Dimension (Unit: mm)



A		B		C		D		E		F		a1		a2	
Min.	Max.	Min.	Max.	Min.	Max.	Min.	Max.	Min.	Max.	Min.	Max.	Min.	Max.	Min.	Max.
2.500	2.800	1.900	2.450	3.900	4.600	1.400	1.800	4.800	5.280	0.760	1.520	-	0.203	0.145	0.255

Packaging

- Quantity: 5,000pcs
- 12mm wide tape on 330mm(13 inch) diameter reel –specification EIA Standard 481.